



## Open Source Cloud Custom Map Tutorial

Follow the steps below to create a custom map saved on the server.

1. **Point your browser to the following URL:** <http://wwetac.us/wwetacmap/users/custommap.aspx>. The login page will be displayed.

A screenshot of a web form titled "WWETAC Custom Map Log In". Below the title is the instruction "Login to retrieve your custom map." There are two input fields: "User Name:" and "Password:". Below the password field is a checkbox labeled "Remember me next time." and a "Log In" button. At the bottom left, there is a link labeled "New User" in purple text.

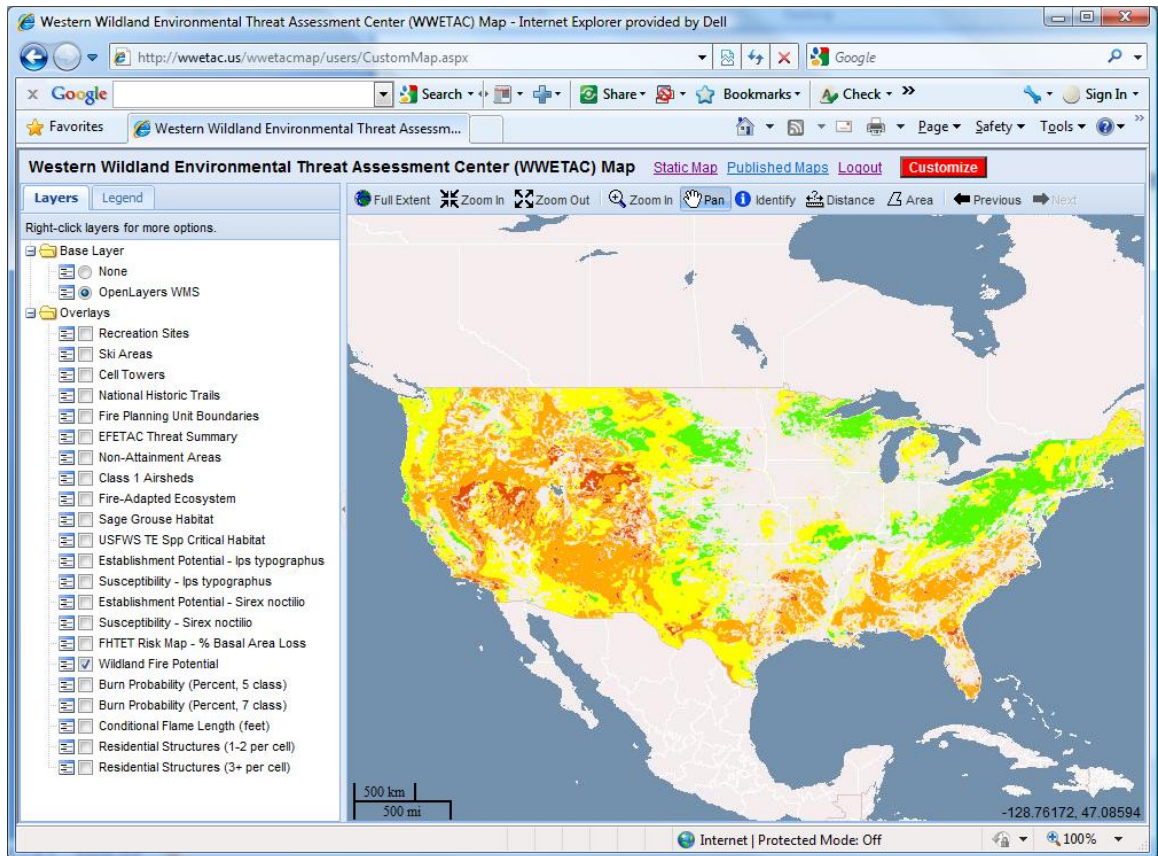
2. **Click on "New User" to create a new user.** The Create New User page will be displayed.

A screenshot of a web form titled "Create New User". It contains four input fields: "User Name:" with the text "tutorial", "Password:" with ten black dots, "Confirm Password:" with ten black dots, and "E-mail:" with the text "kbunzel@kingbirdsoftware". A blue "Create User" button is located at the bottom right.

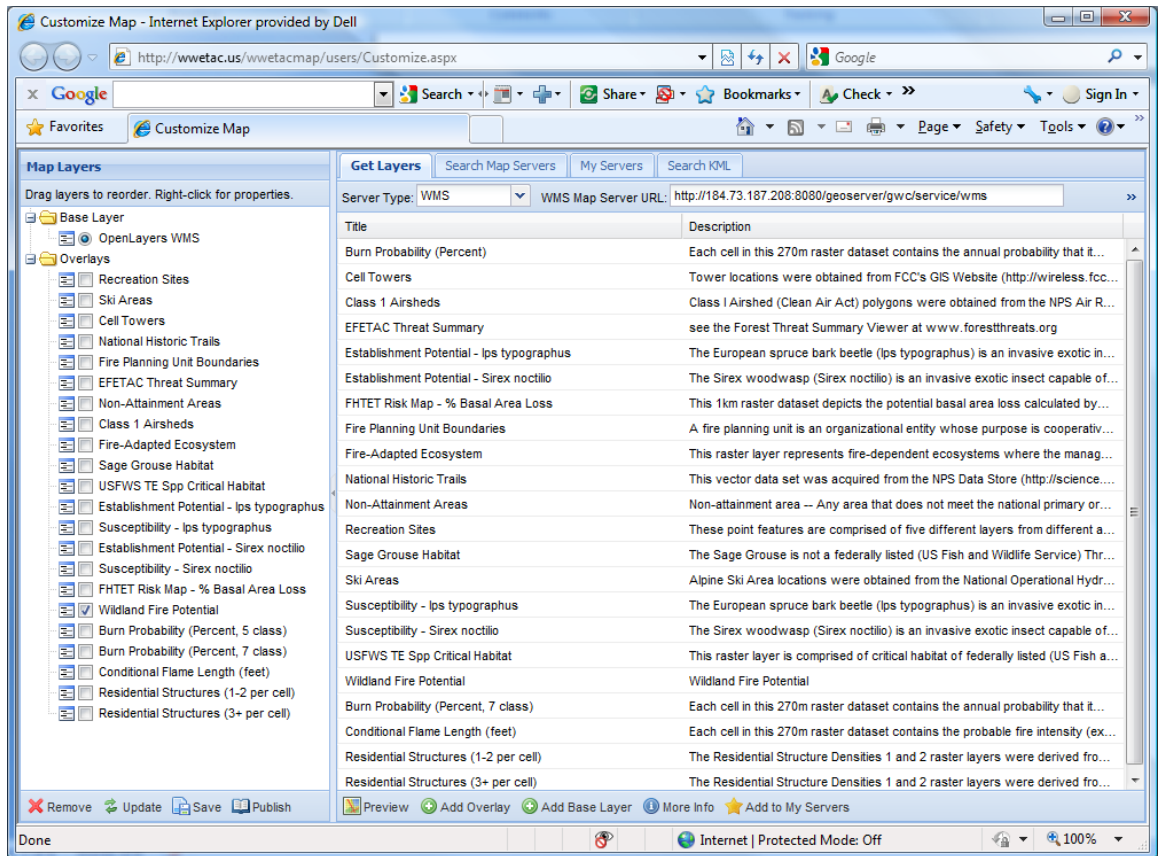
3. **Enter a user name, password, and email. Click Create User to create a new user.** The following page will appear confirming your new account.

A screenshot of a confirmation page titled "Complete". The text reads "Your account has been successfully created." and there is a "Continue" button at the bottom right.

4. **Click Continue to log in.** The following map page will display.

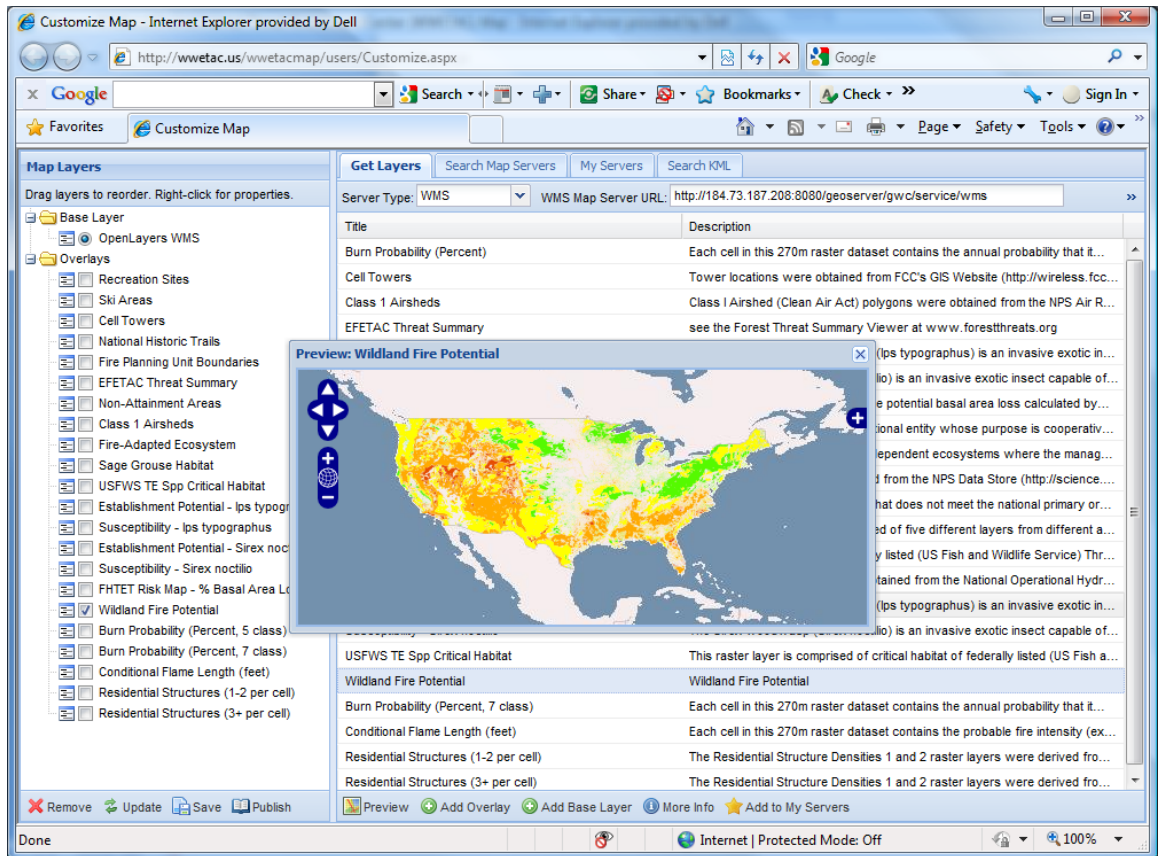


- This is the default customizable map in the geographic coordinate system most commonly supported by non commercial map servers. This map uses the same interface as the static map.
5. **Click the red Customize button located above the map to open the customization tools.** The customize page will open as shown below.

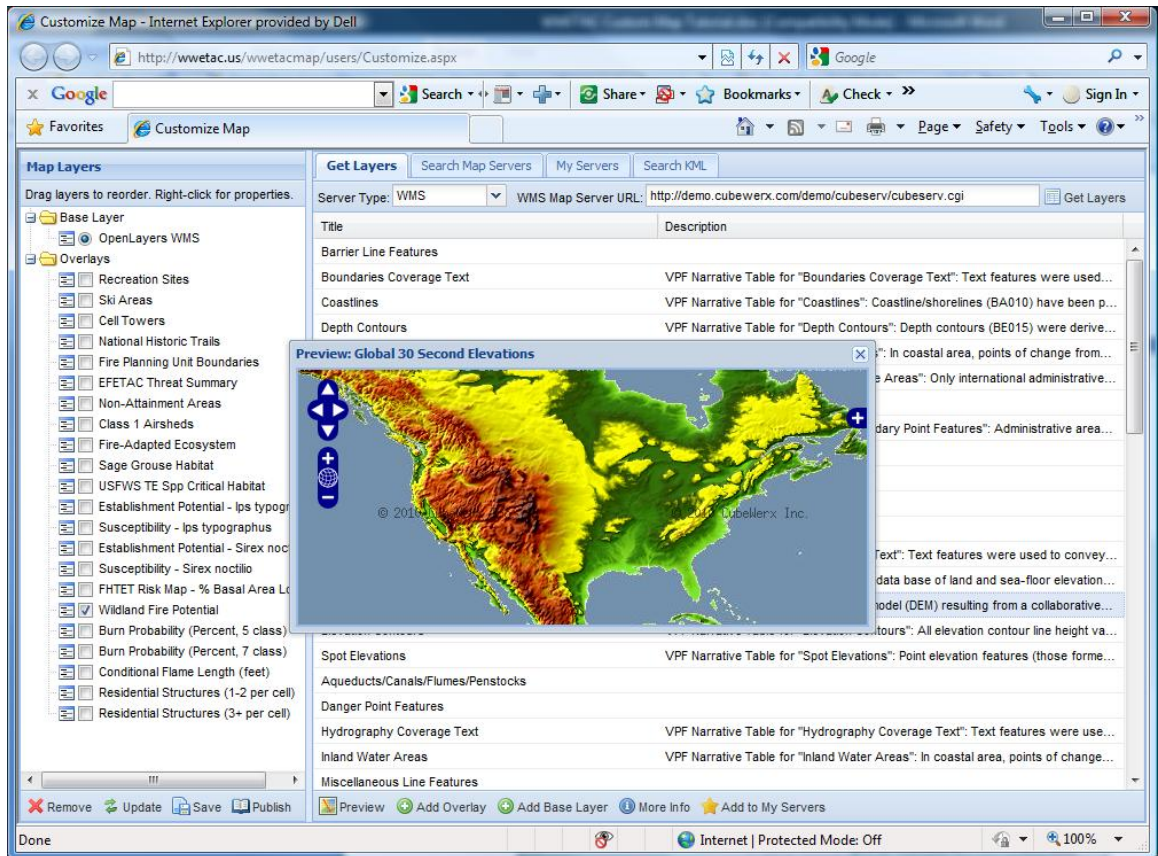


Your current list of map layers is displayed on the left side and tools for searching and retrieving new map layers are on the right side. You can remove layers, change the order of layers, and change the default visibility of the existing layers on the left side. There are four tabs on the right side for searching and getting lists of layers. At the top of the “Get Layers” tab is a field for entering a map server URL. This is initially filled in with the WWETAC (GeoServer) map server hosted on an Amazon cloud server. Each layer has a title and a description in the list below the server. You can view a map preview for each layer by double clicking the layer in the list.

**Double click “Wildland Fire Potential” in the list.** The following preview map will display on top of the customize page. **Close the preview map by clicking in the upper right corner of the preview map window.**



6. To the right of “WMS Map Server URL” enter the following URL: <http://demo.cubewerx.com/demo/cubeserv/cubeserv.cgi> and click “Get Layers”. You may have to wait a minute for the system to contact the map server and retrieve a full list of layers.
7. When the layers have loaded double click the layer entitled “Global 30 Second Elevations f”. This will display a preview map for this layer as shown below. You can close the preview map when you are done viewing it.



8. With the “Global 30 Second Elevations” layer still selected in the list, click the “Add Base Layer” button below the map. This will add this layer as a base layer to the map.
9. Scroll down to the layer entitled “Inland Water Areas”. Select this layer and click “Add Overlay”.
10. Scroll down to the layer entitled “Built-Up Areas”. Select this layer and click “Add Base Layer”.
11. Select the “Search Map Servers” tab. To the right of “Enter Search Terms” enter “fire” and click “Search Map Servers”. After a minute the search engine will return a list of map servers available that have layers with the word “fire”.
12. Select the second server named “Massachusetts Data From MassGIS (GeoServer)”. The server URL will be listed at the bottom of the page when you select it. Click the “Get All Layers” button to the right of the URL. The “Get Layers” tab will be selected and the system will proceed to contact the map server for a list of layers as if you had entered the URL at the top of the page.
13. Select the layer “Anadromous Fish” and click “Add Overlay”.
14. Select the layer “Ecoregions” and click “Add Base Layer”.
15. Select the layer “FEMA Flood Zones” and click “Add Base Layer”.
16. Click the “Add to My Servers” button at the bottom of the page. The server will be added to a list of favorite servers and saved with the map.
17. Click the Save button below the list of layers on the left. This will save your map for future use. The map is saved for the user login. The message below will be displayed confirming the map was saved.

